

PRODUCT CODE/BARCODE ON CONSUMER UNIT

Documentation requirements for commodities

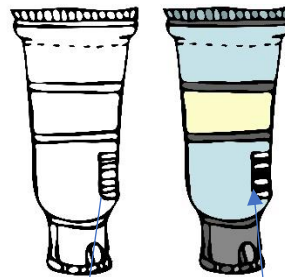
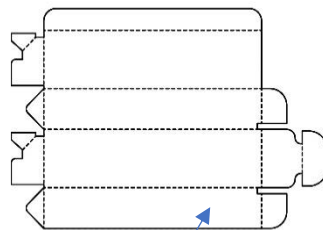
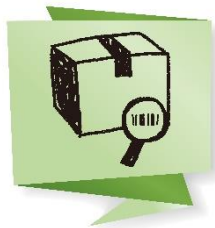
Farmalogg needs a mock-up/artwork/image/print that allows us to control the product code/barcode on the package and to ensure that it is registered for the correct product.

The following information must be readable on the documentation we receive:

- Product code (GTIN/EAN)/barcode
- Product name
- Package size (weight, volume, quantity)

If possible, the image of the barcode should have sufficient resolution to allow us to scan the barcode for quality control.

Examples of documentation:



Same product (Article number xxxxxx) with two product codes:

Original product code 9091926122230 New product code 9091922122248

Farmalogg will be able to handle your product registration much more quickly if you upload the correct documentation during submission. If you do not upload the correct documentation, we will request documentation and put the processing on hold until we receive this.